

1 2 3 4 5 6 7 8

REV	LOCATIONS	DESCRIPTION	DATE	REVISER	APPD
1		Add the size table	26/MAY/15	KATE	FRANK
2		Update terminal material	04/AUG/25	MATT	LEO

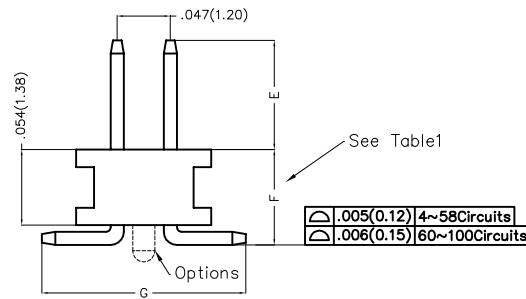
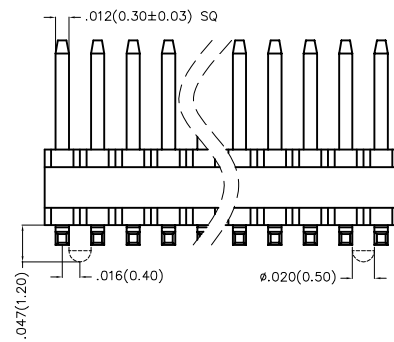
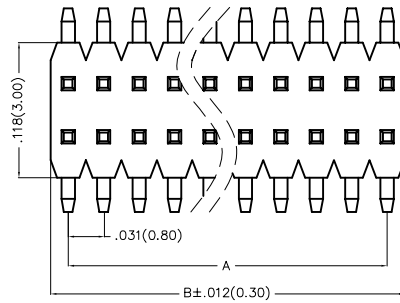
SPECIFICATIONS

Electrical

Current Rating: 1A AC(rms)/DC
 Voltage Rating: 250V AC(rms)/DC
 Contact Resistance: 20 mΩ Max
 Insulation Resistance: 1000 MΩ Min
 Withstanding Voltage: 300V AC r.m.s
 Temperature Range—Operating: -40°C~+125°C

Material and Plating

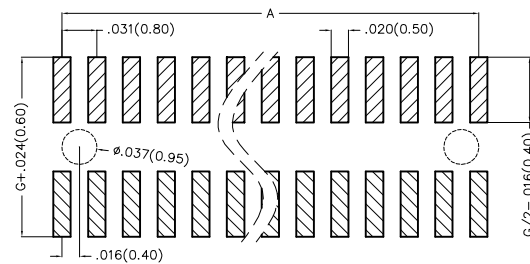
Housing: PA6T (UL 94V-0)
 Pin: Brass
 Pin Plating: Gold plated/ Selective gold in contact area, tin on tail



Ordering Information

FPH 080 01 — D XX S X XX 4 XX M X
 1 2 3 4 5 6 7 8 9 10 11 12

1 Category FPH—Pin Header	2 Series Number 080—Pitch0.80mm	3 Distinction No. 01	4 Row Option D—Double Row	5 Circuits XX	6 Entry Angle S—180° Vertical
7 Plating 1—Gold plated 3—Selective gold in contact area, tin on tail	8 Thickness of Plating 01—1μ" 15—15μ" Custom plate available	9 Material—Resin 4—PA6T	10 Size 01,02... —Serial number (See Table1) Custom length available	11 Packaging M—Reel	12 Type A—W/O Column B—With Column



Recommended P.C.Board Layout

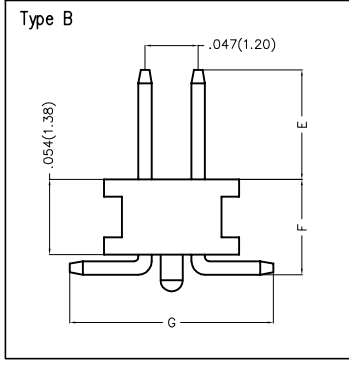
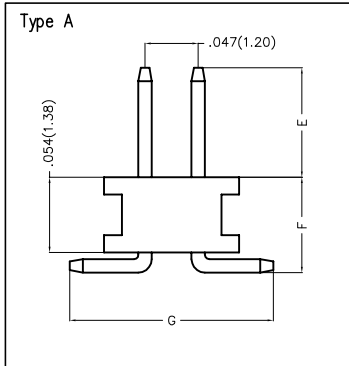
 THIRD ANGLE PROJECTION	GENERAL TOLERANCES (UNLESS SPECIFIED)		APPROVE BY FRANK	DATE 5/AUG/13	PART NO. FPH08001—DXXSXXX4XXMX	ITEM NO. FPH08001	 Leader Of Industry
	DESIGN UNITS Inch (metric)	X.±.012(0.30) X.X±.008(0.20)	X'±5' .X'±2'	CHECKED BY CHERRY	DATE 5/AUG/13	TITLE Board to Board(Pin Header) Pitch 0.8mm 180° Vertical(SMT)	
SCALE 5:1	SIZE A4	X.XX±.006(0.15) X.XXX±.004(0.10)	.XX'±1' .XX'±0.5'	DRAWN BY JACOB	DATE 5/AUG/13	THIS DRAWING CONTAINS INFORMATION THAT IS PROPRIETARY TO TXGA INDUSTRIAL ELECTRONICS(S.Z)CO.,LTD AND SHOULD NOT BE USED WITHOUT WRITTEN PERMISSION	

1 2 3 4 5 6 7 8

REV	LOCATIONS	DESCRIPTION	DATE	REVISER	APPD

Table1

Serial number	Dimensions(in/mm)			Type	Canceled Circuits	Note
	E	F	G			
01	.091(2.30)	.079(2.00)	.181(4.60)	A/B	—	
02	.197(5.00)	.130(3.30)	.181(4.60)	A	—	
03	.118(3.00)	.130(3.30)	.181(4.60)	A	—	



<p>THIRD ANGLE PROJECTION</p>	<p>GENERAL TOLERANCES (UNLESS SPECIFIED)</p>		<p>APPROVE BY FRANK</p>	<p>DATE 5/AUG/13</p>	<p>PART NO. FPH08001-DXXSXXX4XXMX</p>	<p>ITEM NO. FPH08001</p>	<p>Leader Of Industry</p>
	<p>DESIGN UNITS Inch (metric)</p>	<p>X.±.012(0.30)</p>	<p>X.±5'</p>	<p>CHECKED BY CHERRY</p>	<p>DATE 5/AUG/13</p>	<p>TITLE Board to Board(Pin Header) Pitch 0.8mm 180° Vertical(SMT)</p>	
<p>SCALE 5:1</p>	<p>SIZE A4</p>	<p>X.XX±.006(0.15)</p>	<p>.XX'±1'</p>	<p>DRAWN BY JACOB</p>	<p>DATE 5/AUG/13</p>	<p>THIS DRAWING CONTAINS INFORMATION THAT IS PROPRIETARY TO TXGA INDUSTRIAL ELECTRONICS(S.Z)CO.,LTD AND SHOULD NOT BE USED WITHOUT WRITTEN PERMISSION</p>	

REV	LOCATIONS	DESCRIPTION	DATE	REVISER	APPD



Circuits (n)	Part No.	Dimensions(in/mm)		Circuits (n)	Part No.	Dimensions(in/mm)	
		A	B			A	B
4	FPH08001-D04SXXX4XXMX	.031(0.80)	.063(1.60)	54	FPH08001-D54SXXX4XXMX	.819(20.80)	.850(21.60)
6	FPH08001-D06SXXX4XXMX	.063(1.60)	.094(2.40)	56	FPH08001-D56SXXX4XXMX	.850(21.60)	.882(22.40)
8	FPH08001-D08SXXX4XXMX	.094(2.40)	.126(3.20)	58	FPH08001-D58SXXX4XXMX	.882(22.40)	.913(23.20)
10	FPH08001-D10SXXX4XXMX	.126(3.20)	.157(4.00)	60	FPH08001-D60SXXX4XXMX	.913(23.20)	.945(24.00)
12	FPH08001-D12SXXX4XXMX	.157(4.00)	.189(4.80)	62	FPH08001-D62SXXX4XXMX	.945(24.00)	.976(24.80)
14	FPH08001-D14SXXX4XXMX	.189(4.80)	.220(5.60)	64	FPH08001-D64SXXX4XXMX	.976(24.80)	1.008(25.60)
16	FPH08001-D16SXXX4XXMX	.220(5.60)	.252(6.40)	66	FPH08001-D66SXXX4XXMX	1.008(25.60)	1.039(26.40)
18	FPH08001-D18SXXX4XXMX	.252(6.40)	.283(7.20)	68	FPH08001-D68SXXX4XXMX	1.039(26.40)	1.071(27.20)
20	FPH08001-D20SXXX4XXMX	.283(7.20)	.315(8.00)	70	FPH08001-D70SXXX4XXMX	1.071(27.20)	1.102(28.00)
22	FPH08001-D22SXXX4XXMX	.315(8.00)	.346(8.80)	72	FPH08001-D72SXXX4XXMX	1.102(28.00)	1.134(28.80)
24	FPH08001-D24SXXX4XXMX	.346(8.80)	.378(9.60)	74	FPH08001-D74SXXX4XXMX	1.134(28.80)	1.165(29.60)
26	FPH08001-D26SXXX4XXMX	.378(9.60)	.409(10.40)	76	FPH08001-D76SXXX4XXMX	1.165(29.60)	1.197(30.40)
28	FPH08001-D28SXXX4XXMX	.409(10.40)	.441(11.20)	78	FPH08001-D78SXXX4XXMX	1.197(30.40)	1.228(31.20)
30	FPH08001-D30SXXX4XXMX	.441(11.20)	.472(12.00)	80	FPH08001-D80SXXX4XXMX	1.228(31.20)	1.260(32.00)
32	FPH08001-D32SXXX4XXMX	.472(12.00)	.504(12.80)	82	FPH08001-D82SXXX4XXMX	1.260(32.00)	1.291(32.80)
34	FPH08001-D34SXXX4XXMX	.504(12.80)	.535(13.60)	84	FPH08001-D84SXXX4XXMX	1.291(32.80)	1.323(33.60)
36	FPH08001-D36SXXX4XXMX	.535(13.60)	.567(14.40)	86	FPH08001-D86SXXX4XXMX	1.323(33.60)	1.354(34.40)
38	FPH08001-D38SXXX4XXMX	.567(14.40)	.598(15.20)	88	FPH08001-D88SXXX4XXMX	1.354(34.40)	1.386(35.20)
40	FPH08001-D40SXXX4XXMX	.598(15.20)	.630(16.00)	90	FPH08001-D90SXXX4XXMX	1.386(35.20)	1.417(36.00)
42	FPH08001-D42SXXX4XXMX	.630(16.00)	.661(16.80)	92	FPH08001-D92SXXX4XXMX	1.417(36.00)	1.449(36.80)
44	FPH08001-D44SXXX4XXMX	.661(16.80)	.693(17.60)	94	FPH08001-D94SXXX4XXMX	1.449(36.80)	1.480(37.60)
46	FPH08001-D46SXXX4XXMX	.693(17.60)	.724(18.40)	96	FPH08001-D96SXXX4XXMX	1.480(37.60)	1.512(38.40)
48	FPH08001-D48SXXX4XXMX	.724(18.40)	.756(19.20)	98	FPH08001-D98SXXX4XXMX	1.512(38.40)	1.543(39.20)
50	FPH08001-D50SXXX4XXMX	.756(19.20)	.787(20.00)	100	FPH08001-D100SXXX4XXMX	1.543(39.20)	1.575(40.00)
52	FPH08001-D52SXXX4XXMX	.787(20.00)	.819(20.80)				

<p>THIRD ANGLE PROJECTION</p>	GENERAL TOLERANCES (UNLESS SPECIFIED)		APPROVE BY	DATE	PART NO.	ITEM NO.	<p>Leader Of Industry</p>	
	X.±.012(0.30)	X:±5'	FRANK	5/AUG/13	FPH08001-DXXSXXX4XXMX	FPH08001		
	X.X±.008(0.20)	.X:±2'	CHECKED BY	DATE	TITLE	REV 2		SHEET NO. 3/3
	X.XX±.006(0.15)	.XX'±1'	CHERRY	5/AUG/13	Board to Board(Pin Header) Pitch 0.8mm 180° Vertical(SMT)			
SCALE	SIZE	X.XXX±.004(0.10)	.XXX'±0.5'	DRAWN BY	DATE	THIS DRAWING CONTAINS INFORMATION THAT IS PROPRIETARY TO TXGA INDUSTRIAL ELECTRONICS(S.Z)CO.,LTD AND SHOULD NOT BE USED WITHOUT WRITTEN PERMISSION		
5:1	A4			JACOB	5/AUG/13			